



SANTA CRUZ COUNTY  
ENVIRONMENTAL HEALTH



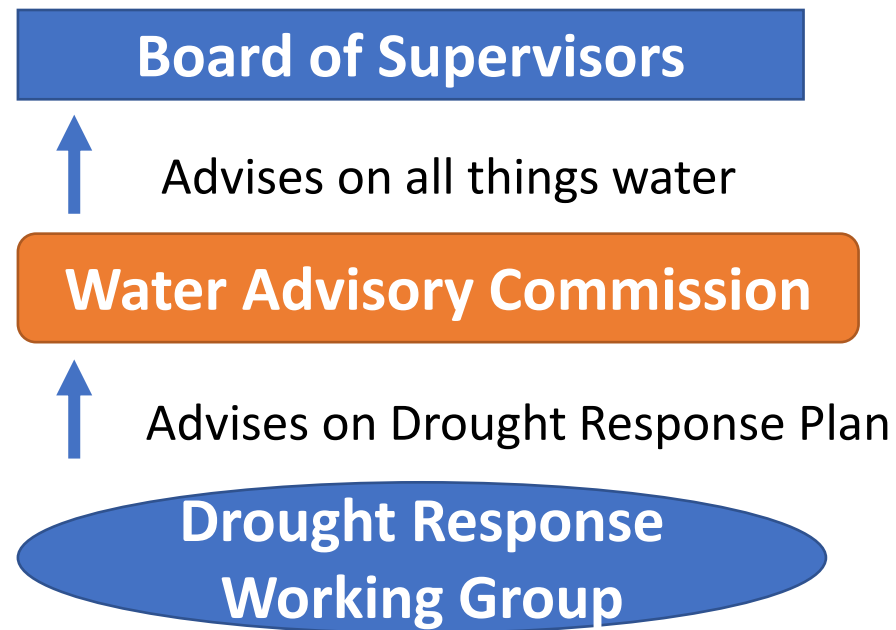
# Senate Bill 552

Santa Cruz County Compliance Strategy

# Santa Cruz County Approach



- The existing County Water Advisory Commission will take on the responsibility of a standing body to implement SB 552
- Outside perspectives are included through the Drought Response Working Group, a Subcommittee of the Water Advisory Commission



# Drought Response Working Group

| Representative Entity                           | Selected By                  |
|---|------------------------------|
| Water Advisory Commission (Small water systems) | Selected by Commissioners    |
| Water Advisory Commission                       | Selected by Commissioners    |
| Water Advisory Commission                       | Selected by Commissioners    |
| Pajaro Valley Water Management Agency           | Selected by Agency Board     |
| Santa Cruz Mid-County Groundwater Agency        | Selected by Agency Board     |
| Santa Margarita Groundwater Agency              | Selected by Agency Board     |
| DAC/Environmental Justice                       | RCAC, Selected by RCAC Staff |
| At-Large Environmental                          | Application Process          |
| At-Large Domestic Well or SWS Customer          | Application Process          |

# PHASED APPROACH TO SB552 COMPLIANCE



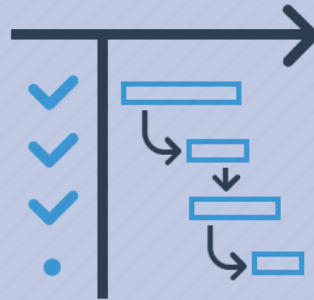
## 1. Prioritization and early planning

Identify gaps & needs  
Identify priorities for grant funding  
Identify actionable next steps

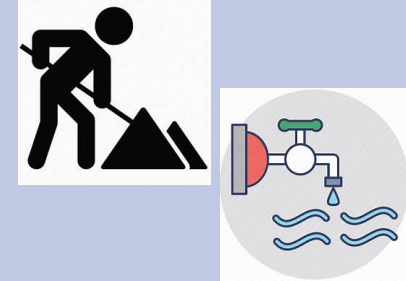


## 2. Continued planning & early design

Grant-writing  
Feasibility/cost studies  
Technical studies  
Conceptual designs



## 3. Begin implementation of plans and strategies




# Goals




1. Compile existing data and identify actions to optimize the County data collection system in order to inform recommendation-making for County, State or individual well systems.
2. Provide guidance for directing County resources for specific feasibility/planning efforts, changes to County Code, and agreements/MOUs
3. Inform Climate Action and Adaptation Plan


Meeting 1:  
Work group  
process and  
groundwater  
overview  
May 13,  
2022

- Introductions, background information, schedule and goals
  - Summary of water resources in the County
    - Wells, small water systems, GSAs, and areas with known groundwater supply problems
  - CAAP: Climate change and mitigations
  - Legal framework: current and upcoming requirements
  - Action items and next steps
- 

Meeting 2:  
Private Wells  
June 16,  
2022


- Individual Water Systems - permits and existing data
  - Priorities for drought grant funds and outreach
  - Components of a well mitigation strategy
  - Emergency supply
    - What is best role for the County?
  - Long-term solutions
    - Direction for planning/feasibility grant proposals
- 

Meeting 3:  
Small Water  
Systems  
July 20, 2022

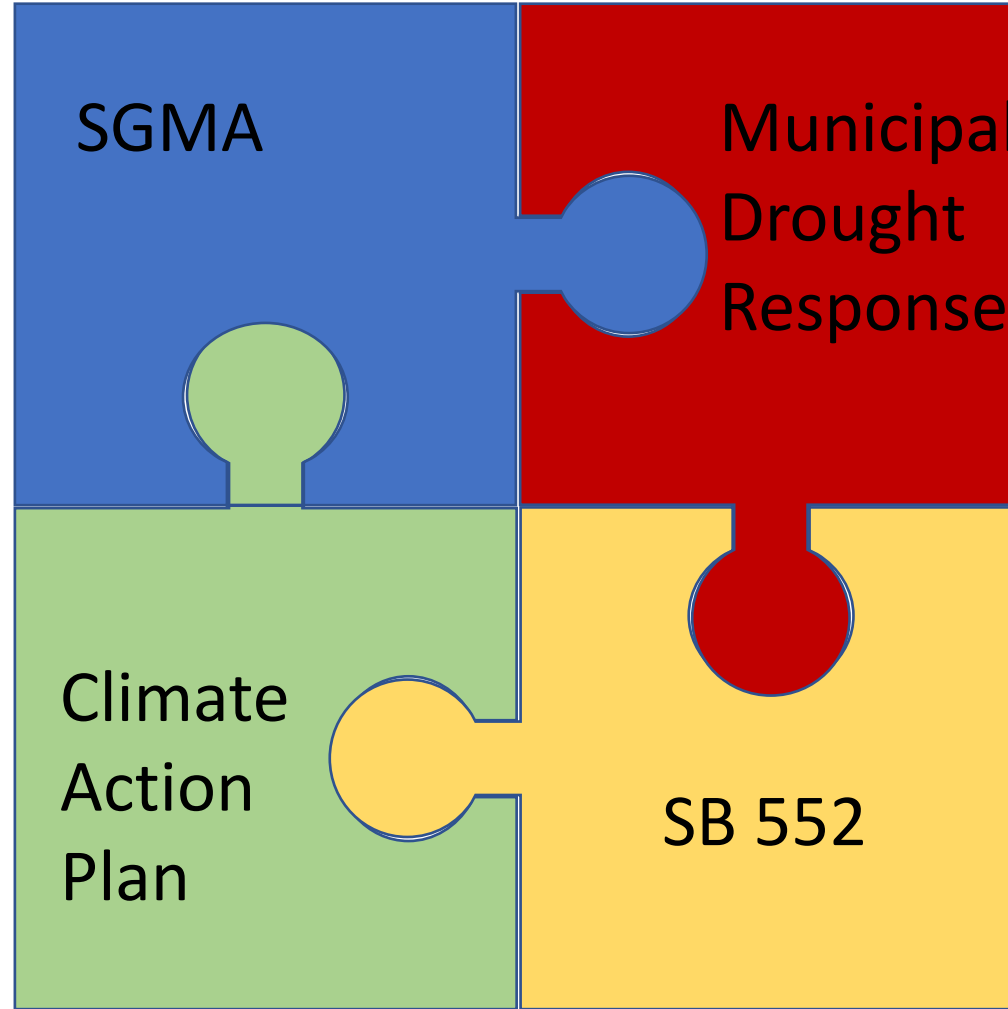
- Vulnerability assessment
  - Barriers to consolidation
  - Upcoming requirements
    - Which systems will not be able to meet them?
  - Encouraging dedicated maintenance funds
  - Prioritize locations for intertie and consolidation feasibility studies
- 



Meeting 4:  
Next Steps  
August 16,  
2022

- Policies, laws, ordinances
  - Processes and flow charts
  - Planning grant priorities
  - Emergency response protocols
    - MOUs for water trucks, LAFCO streamlining
  - Funding (CSAs, small water systems)
  - Potential funding sources (Hazard Mitigation Grants, SAFER, others)
- 

# Water Supply Security Puzzle



## SGMA

- Prevents groundwater depletion
- Geographically limited to defined Basins
- Looks at levels regionally, does not protect individual wells.
- Exempts droughts from “sustainability”
- Eligible for SGMA-related funding

## Municipal Drought Response

- Provides municipal alternatives to groundwater during drought
- Eligibility for resilience and infrastructure funding
- Fills gaps left by SGMA (drought impacts) and SB 552 (source water for emergency supplies)

## Climate Action Plan

- Models future hydrologic regime and sea level rise regionally
- Looks at impacts of drought beyond water supply for people such streamflow reduction and fire
- Looks for system wise mitigation and adaptation
- Eligible for several funding sources

## SB 552

- Drought specific resiliency for small and individual systems
- Will require evaluation of secondary supplies, either interties or second wells
- A lot of emphasis on water hauling, where to get that water?
- Covers the entire County

# Questions?

Thank You

[Sierra.Ryan@santacruzcounty.us](mailto:Sierra.Ryan@santacruzcounty.us)

